

Grúa Broderson Ic80

Descripción

Transmisión

Tipo de transmisión Cambio de fuerza de velocidades

Número de marchas adelante 4

Número de marchas atrás 4

Velocidad máxima hacia adelante 32.2 km/h

Velocidad máxima marcha atrás 32.2 km/h

Pluma

Número de secciones 3

Altura mínima con el ángulo máximo de ascenso 6.1 m

Altura máx con el ángulo de elevación máx sin pluma 11.4 m

Ángulo máximo de elevación 70 grados

Capacidad máxima de carga 8164.7 kg

Velocidad de giro 2 RPM.

Radio útil mínimo 1.5 m

Radio útil máximo 12.2 m

Motor

Modelo Cummins 4 Cil a Diesel

Potencia total 51.5 kW

Momento de fuerza máximo 221 Nm

Cilindrada 4

Dimensiones

Longitud de transporte 5404.1 mm

Ancho del transporte 1981.2 mm

Altura del transporte 2209.8 mm

Despeje sobre el suelo 176.8 mm

Eje de ruedas 2185.4 mm

Ancho con los estabilizadores extendidos 2920 mm

Longitud del chasis/bastidor 3904.5 mm

Radio de oscilación de la parte trasera de la estructura superior 1450.8 mm



COTIZA DESDE TÚ MÓVIL EN:

www.lugon.com.mx

BRODERSON MODEL IC-80-1F/2F/3F - 8.5 TON CAPACITY

IC-80-1F 8' 2" - 20' 2" BOOM

CAPACITIES APPLY TO OPERATION ON FIRM LEVEL SURFACE					
LOAD RADIUS FEET	MAIN BOOM OR EXTENSION CAPACITIES IN POUNDS				
	360 DEGREE ROTATION		OVER FRONT		
	ON RUBBER	ON OUTRIGGERS	ON RUBBER	ON OUTRIGGERS	ON OUTRIGGERS
5	9600	17000	11700	17000	
6	7900	14500	10400	14500	
8	5750	10250	8400	10250	
10	4150	7700	6300	7700	
12	3100	6550	4850	6550	
14	2425	5550	3650	5550	
16	1975	4650	3000	4650	
18	1625	3950	2500	4150	
20	1400	3550	2150	3800	
22	1275	3000	1900	3000	
24	1075	2750	1650	2800	
26	925	2450	1425	2600	
28	775	2150	1250	2400	
30	675	1950	1100	2250	
BOOM EXT. ANGLE	10 - FOOT BOOM EXTENSION - STRAIGHT OR OFFSET				
	MAIN BOOM ANGLE				
	0°	30°	45°	60°	70°
*-0°	2250	2600	3200	5000	7000
-15°	---	2400	2700	3500	4200
-30°	---	2250	2500	3000	3300

IC-80-2F 9' 6" - 24' 0"

CAPACITIES APPLY TO OPERATION ON FIRM LEVEL SURFACE					
LOAD RADIUS FEET	MAIN BOOM OR EXTENSION CAPACITIES IN POUNDS				
	360 DEGREE ROTATION		OVER FRONT		
	ON RUBBER	ON OUTRIGGERS	ON RUBBER	ON OUTRIGGERS	ON OUTRIGGERS
5	9500	17000	11600	17000	
6	7800	14500	10200	14500	
8	5500	10250	8250	10250	
10	3900	7700	6200	7700	
12	2900	6550	4550	6550	
14	2300	5550	3550	5550	
16	1850	4550	2850	4550	
18	1550	3950	2400	4050	
20	1300	3250	2050	3650	
22	1100	2875	1750	3300	
24	925	2475	1550	3100	
26	850	2250	1350	2750	
28	700	2000	1175	2500	
30	600	1775	1025	2300	
32	500	1625	900	2100	
34	425	1400	800	1950	
BOOM EXT. ANGLE	10 - FOOT BOOM EXTENSION - STRAIGHT OR OFFSET				
	MAIN BOOM ANGLE				
	0°	30°	45°	60°	70°
*-0°	2250	2600	3200	5000	7000
-15°	---	2400	2700	3500	4200
-30°	---	2250	2500	3000	3300

* Use 0° for straight boom extension.

-- Use 0°, 15° or 30° for offset boom extension. Boom extension loads must not exceed main boom capacity.

* Use 0° for straight boom extension.

-- Use 0°, 15° or 30° for offset boom extension. Boom extension loads must not exceed main boom capacity.



USE SINGLE PART LOAD LINE FOR LOADS TO 9000 LBS. (WT. 90LBS.)



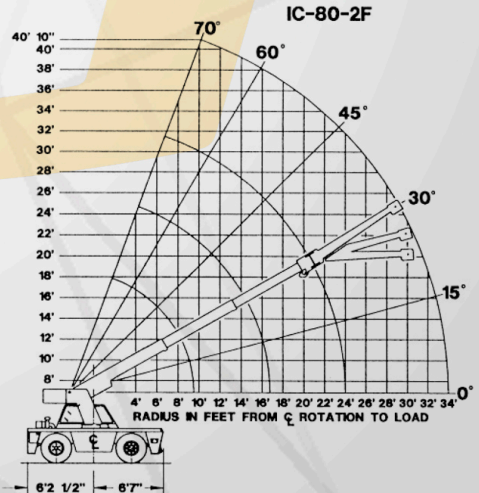
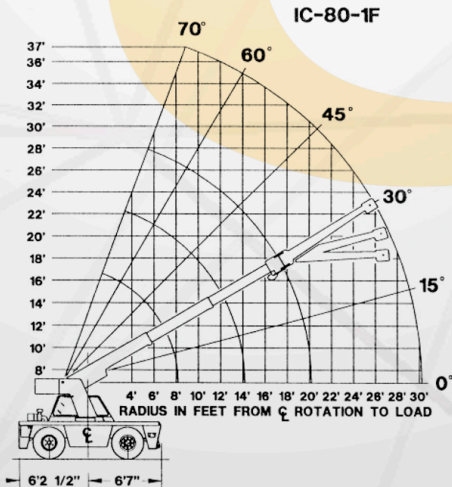
USE TWO PART LOADLINE FOR LOADS TO 17000 LBS. (WT. 124LBS.)



USE SINGLE PART LOAD LINE FOR LOADS TO 9000 LBS. (WT. 90LBS.)



USE TWO PART LOADLINE FOR LOADS TO 17000 LBS. (WT. 124LBS.)



COTIZA DESDE TÚ MÓVIL EN:
www.lugon.com.mx

IC-80-3F 11' 6" - 30' 0"

CAPACITIES APPLY TO OPERATION ON FIRM LEVEL SURFACE

LOAD RADIUS FEET	MAIN BOOM OR EXTENSION CAPACITIES IN POUNDS				
	360 DEGREE ROTATION		OVER FRONT		
	ON RUBBER	ON OUTRIGGERS	ON RUBBER	ON OUTRIGGERS	
5	9400	17000	11400	17000	
6	7550	14000	10000	14000	
8	5250	10000	8100	10000	
10	3600	7700	6100	7700	
12	2650	6100	4450	6100	
14	2050	5200	3400	5200	
16	1600	4400	2700	4400	
18	1250	3650	2200	3900	
20	1050	3050	1800	3400	
22	850	2650	1550	3050	
24	750	2300	1350	2800	
26	650	2050	1150	2550	
28	550	1850	1000	2350	
30	450	1650	900	2150	
32	350	1550	750	1950	
34	250	1400	650	1800	
36	200	1250	550	1650	
38	150	1100	450	1500	
40	100	1000	400	1400	
BOOM EXT. ANGLE	10 - FOOT BOOM EXTENSION - STRAIGHT OR OFFSET				
	MAIN BOOM ANGLE				
	0°	30°	45°	60°	70°
~0°	2250	2600	3200	5000	7000
~15°	---	2400	2700	3500	4200
~30°	---	2250	2500	3000	3300

* Use 0° for straight boom extension.

- Use 0°, 15° or 30° for offset boom extension. Boom extension loads must not exceed main boom capacity.

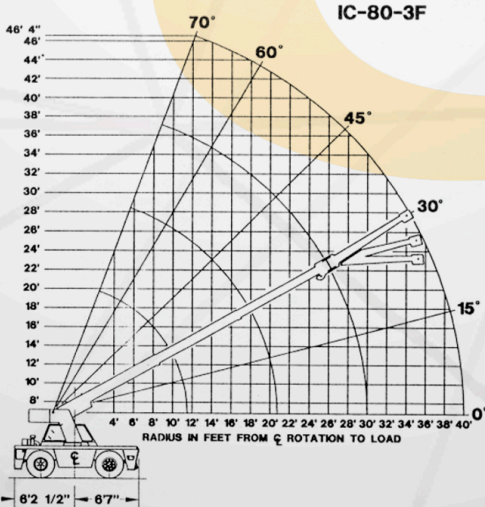
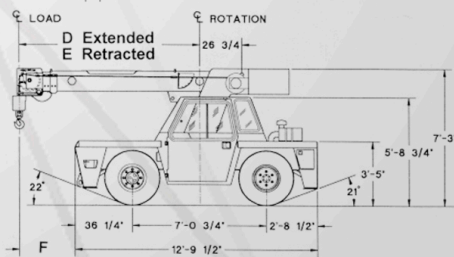
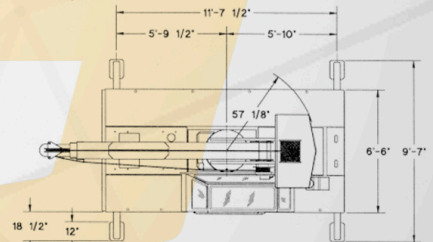
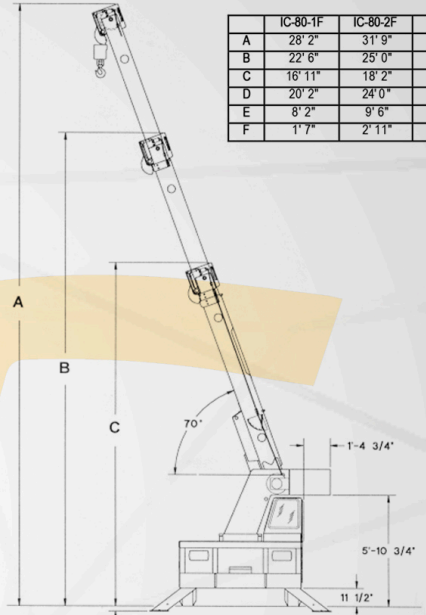


USE SINGLE PART LOAD LINE FOR LOADS TO 9000 LBS. (WT. 90LBS.)



USE TWO PART LOADLINE FOR LOADS TO 17000 LBS. (WT. 124LBS.)

	IC-80-1F	IC-80-2F	IC-80-3F
A	28' 2"	31' 9"	37' 5"
B	22' 6"	25' 0"	28' 9"
C	16' 11"	18' 2"	20' 0"
D	20' 2"	24' 0"	30' 0"
E	8' 2"	9' 6"	11' 6"
F	1' 7"	2' 11"	4' 11"



COTIZA DESDE TÚ MÓVIL EN:
www.lugon.com.mx